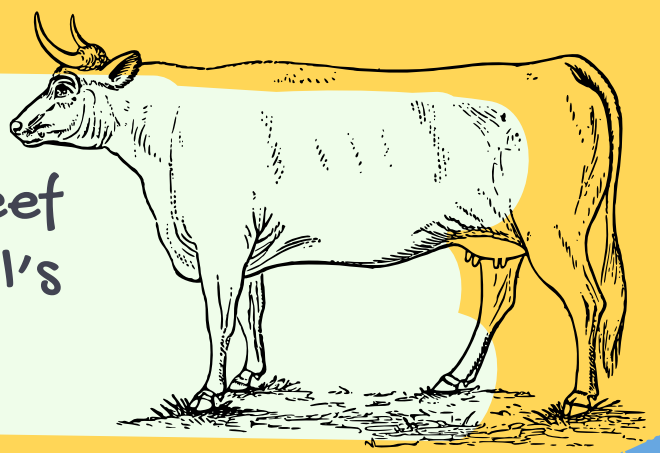


FROM FARM To Plate



Free range eggs from
Laura's hens at Borough
Farm, Mortehoe

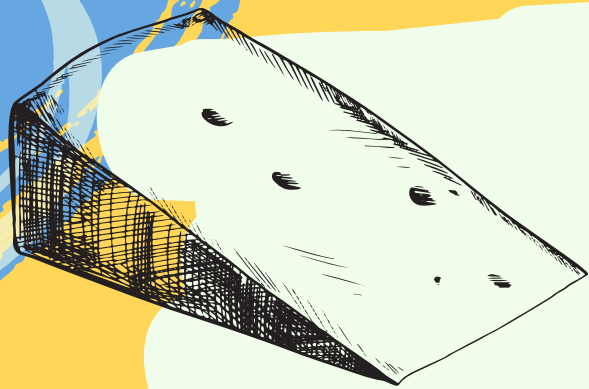
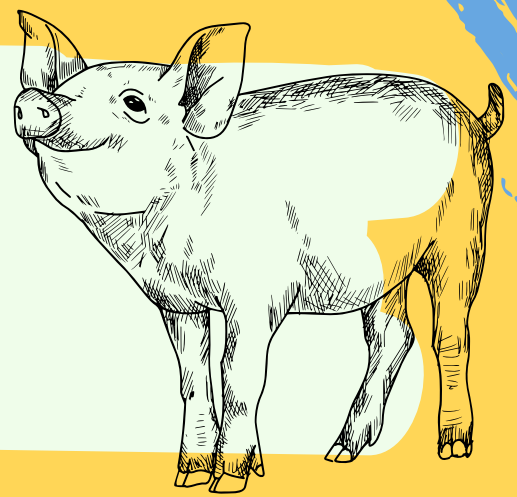


Quality Exmoor Park beef
fillet from Chris Lerwill's
farm, Combe Martin



Seasonal and all round crops
from the Great Field at
Braunton

High welfare British bacon, and
hand made butchers sausages
from Tony The Butcher, West
Plaistow Farm



Handmade cheese from local
producers, Curworthy & South
Hams, Ticklemore farms, mid
Devon